

# GranitePark4



## Property Highlights

- A 12-story Class AA office building located in Granite Park
- Offering dramatic, unobstructed views and excellent accessibility to Dallas North Tollway and State Highway 121
- **THE LOUNGE** | A 3,100 SF corporate living room within the building lobby
- **THE YARD** | Outdoor courtyard with Wi-Fi access
- **MOVE** | Fitness centers are situated in Granite Park 2, 3 and 4, available to our customers at no charge
- **EATS** | Paesano's Café
- **MEET** | Conference centers located in Granite Park 1, 3, 4 and 5, available to customers with appropriate booking
- DFW Airport is accessible in less than a 25-minute drive via State Highway 121
- Supported by 24-hour security



## Granite

### Location

5850 Granite Parkway  
Plano, Texas 75024

### Rental Rate

\$35.00 - \$36.00 NNN

### OPEX

\$14.82 PSF

### Electric

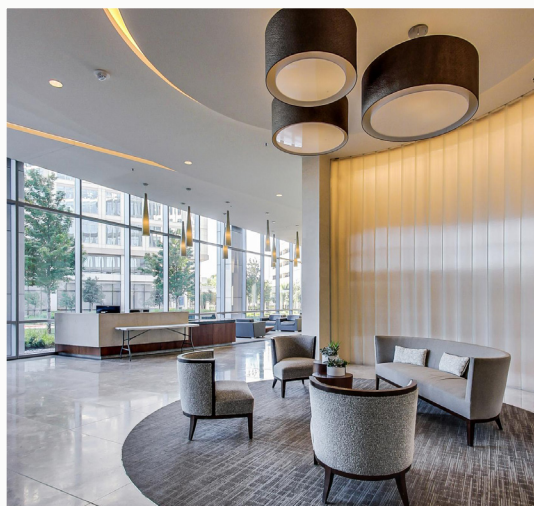
\$1.18 PSF

### Parking Details

3:1,000

Reserved: \$100/month

Unreserved: \$0/month



## Leasing Information

Robert Jimenez, 972-731-2367  
rjimenez@graniteprop.com

Burson Holman, 972-731-2364  
bholman@graniteprop.com

Elizabeth Fortado, 972-731-2354  
efortado@graniteprop.com

GranitePark4.com  
GraniteProp.com